

Ads Taken Till 5 p.m. Tuesday

IT'S EASY TO BUY-SELL-RENT-HIRE & FIND WITH

WANTED ADS

WANT ADS The Chelsea Standard WANTED AD RATES

WANT ADS ST. MARY'S Annual Roast Beef Dinner

WANT ADS FOR SALE - 1955 Int'l Harvest tractor

TIPS Right there is the reason I got a refrigerator in the Standard Want Ads with a lock on the door!

WANT ADS TOY DRIVE - Cleaning out the attic?

WANT ADS ATTENTION FARMERS! An ideal horse trailer

WANT ADS KNAPP SHOES

WANT ADS ST. MARY'S Annual Roast Beef Dinner

Chelsea Heat Treating, Inc. Tinsmiths

FORD CORNER Orchard & Main Chelsea's Largest and Finest Selection of USED CARS

WANT ADS FOR RENT - Office space over Dexter Leader office

WANT ADS FOR SALE - Winter clothing, ladies size 10

Free Designing Free Planning Free Engineering

WANT ADS A Small Deposit Will Lay-Away Your Toy or Gift

IMPORTED DUTCH BULBS

Looking For New TV-SET?

REFRIGERATION REPAIR MAN

NOTICE All our 1954-55 Old Ford Used Cars

WANT ADS HEADQUARTERS FOR Ball Band

WANT ADS ARLAN'S DEPARTMENT STORE

SMILEY POST BUILDINGS

George's Shoe Repair Shop

SEPTIC TANKS AND DRAIN FIELDS

PORTER'S TV Sales & Service

Montgomery-Ward

TRUCKS 2 1967 FORD PICK-UPS

REAL ESTATE Do you want a home or cottage on a lake

REAL ESTATE FOR SALE 2-FAMILY HOUSE

Braun-Brumfield, Inc.

Foster's Men's Wear

USED TRACTOR TIRES

TOY DRIVE - Cleaning out the attic?

CLOGGED SEWER Reynolds Sewer Service

SEE OR CALL LYLE CHRISWELL

Church Property For Sale in Chelsea

REAL ESTATE FOR SALE 10 MILES NORTH

Help Wanted NEWSPAPER

For Stanley Home Products

SWEET CIDER for sale

HOUSE FOR SALE - Cavanaugh

VAN BUREN EAST APTS.

PALMER FORD 50-Year Dealer

FOR TRACTORS and equipment

NEED BABYSITTER in my home

Help Wanted

CHLSEA STANDARD 300-N. Main St.

Need Listings Now

UNUSUAL OPPORTUNITY

Male Factory Help Wanted

MERCYWOOD HOSPITAL ACCEPTING APPLICATIONS

REAL ESTATE FOR SALE

CLARENCE WOOD BROKER

Federal Land Bank Association

Need Listing Immediately

Real Estate For Sale

Fortune Industries, Inc.

Male Factory Help Wanted

REAL ESTATE FOR SALE

- FOR SALE - NEW 3-BEDROOM RANCH HOME

Real Estate FOR SALE

Need Listing Immediately

Real Estate For Sale

Staffan Funeral Home "Funeral Directors for Four Generations"

REAL ESTATE FOR SALE

R. D. MILLER REAL ESTATE BROKER

Real Estate FOR SALE

-SPECIALS- SWIFT'S PREMIUM Bacon

WANT ADS
US for transit mixed com...
FOR INSURANCE
N. H. MILES
AGENT
GR 5-8334
ALLSTATE

WANT ADS
WANTED TO RENT by Nov. 15...
UNICEF Drive
Totals \$288.70

School Board Briefs
(Continued from page one)
well and the administration is...
High school and the contractor...
Ganeron reported on attempts...

HUNTING
Permitted without charge
on land in
CROPLAND ADJUSTMENT
PROGRAM
Details at Farm Headquarters

UFO Expert
To Appear on
TV Program
East Lansing - Orson Bean...

from HISTORY'S SCRAPBOOK
DATES AND EVENTS FROM YESTERYEARS
The Armistice ending World War I...
The Mayflower arrived at Cape Cod Harbor...

WILD BIRDS
FEEDERS.
SEED MIX
SUNFLOWER SEED
SUET CAKES

Whitney Farm Sold
The Earl Whitney farm, located...
Bidders of the property...

NORTH FRANCISCO
Mrs. Loran Hindler and children...
Mrs. Roy Miller called...

WELCOME SIGN FOR HUNTERS: Thanks to the new federal...
CROPLAND ADJUSTMENT PROGRAM...

MUSIC
Guest pianist John Irwin...
Music for the Cella 'Beethoven'...

Rifle Ban Sought In Waterloo Area
The circulating of petitions...
The incident believed the bullet...

FOR PROFIT
FEED
HERE'S HOW
TO GET RESULTS
Plan your feeding program...
Farmers' Supply Co.
Phone GR 5-5511

Washtenaw 4-H Livestock
Members Score in Detroit
Washtenaw county 4-H Livestock...
James Burmeister, age 14...

COLLEGE STUDENTS
NET Journal presents a documentary...
The program documents the experiments...

TODAY'S THOUGHT
By LOUIS BURGHARDT
Did you read about the internationally known...
goldsmith who was given an order...

DEER HUNTING RIFLES
Rimington Model 760 \$129.95
Inchester Model 100, \$155.95
Automatic, 308 caliber
Inchester 22, Model 190 \$44.95
Automatic
Vege 22 Magnum \$46.95
Bolt action repeater

Hunting Coats
and Pants
Regular \$8.88
CLOSE-OUT PRICE
\$5.88
DEER HUNTERS'
RED BUCKSKIN
GLOVES
\$2.98 pr.

Deer Hunters' Ammunition
We Stock All
Popular Calibers
Get Our Prices!
FOOTBALLS
Official size.
\$2.49 - \$5.88

Repair Those Cracked
Or Broken Storm Sash
NOW!
We cut glass to size and reglaze wood or aluminum...
Finkbeiner Lumber Co.
Phone GR 9-3881

CLOSE-OUT PRICES
Parkerette Lawn Sweeper
Reg. \$33.95; Close-Out \$28.88
Lawn or Leaf Rakes
Steel, 20 tines 88c

Guard against
infection
from
28
Infectious
bacteria
Mycitracin®
Triple Antibiotic Ointment
\$1.58
Chelsea Drug Store
Phone GR 5-4511

CHRISTMAS CLUB
MEMBERS NOTE:
Saturday, November 12
Is Final Date
For Payment on
1966 Christmas Club Accounts
Checks will be mailed out
by November 21.

5%
annual rate on 1-year Certificates
of Deposit in amounts of \$1,000
and multiples of \$500; with auto-
matic renewal.
Regular savings passbook accounts continue to receive
4% per annum, compounded semi-annually
CHELSEA STATE BANK
Member Federal Reserve System Member Federal Deposit Insurance Corp.

THE SUPERMARKET THAT'S JUST A LITTLE BIT BETTER

Stop & Shop

14901 Old U.S. 12
Corner at M-52
Chelsea

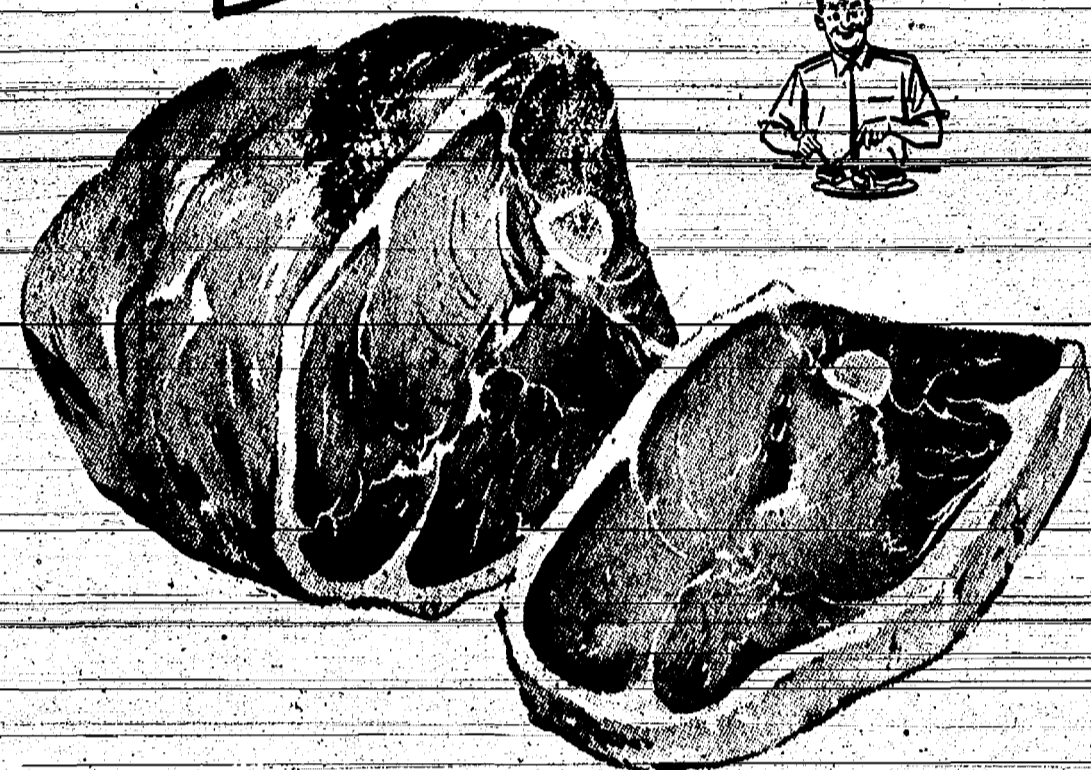


Prices Effective
Wednesday, Nov. 9 thru Tuesday, Nov. 15

The Know How of Intelligent Meat Buying is Really the "Know Where"

Our customers have learned to depend on the outstanding quality of Stop & Shop meats - unflinching satisfaction with every cut they purchase. The finest quality, together with the experienced expertise of our meat cutting experts, makes an unbeatable combination!

... IT'S TIME! ORDER YOUR
FRESH DRESSED THANKSGIVING TURKEY
We feature "Triple R Farms" Fresh Dressed and Honeysuckle Turkeys. All sizes available at our low prices.



"Triple R Farms" U.S.D.A. Choice
BONELESS ROLLED RUMP
or
SIRLOIN TIP ROAST

99¢
lb.

"Triple R Farms" U.S.D.A. Choice

Boneless ROUND STEAK . . . 89¢
lb.

"Triple R Farms" U.S.D.A. Choice

SIRLOIN STEAK 99¢
lb.

"Triple R Farms" U.S.D.A. Choice

Ground ROUND STEAK . . . 89¢
lb.

Stop & Shop's Fresh, Lean, All Beef

Hamburger 53¢
3 Lb. Units of More

Lean, Tender, Boneless and Cubed

Pork Cutlets 79¢
lb.

"Triple R Farms" U.S.D.A. Choice

Chuck Steaks 63¢
lb.

"Triple R Farms" Tender, Delicious

Cube Steaks 99¢
lb.

"Triple R Farms" U.S.D.A. Choice

Rib Steaks 99¢
lb.

"Triple R Farms" Mich. Grade 1

SKINLESS WIENERS

49¢
lb.

Fresh, Tender, Sliced

BEEF LIVER

39¢
lb.

Lean, Tender, Meaty

PORK STEAKS

59¢
lb.

Farm Fresh Produce

Florida, Sweet, Juicy

ORANGES

5 5-Lb. 49¢
Bag

Florida White Seedless

Grapefruit 49¢
5-Lb. Bag

WE RESERVE THE RIGHT TO LIMIT QUANTITIES



Tips from the
STOP & SHOP CHEF
Questions & Answers

Is there a way to prevent mushroom caps from collapsing when they are sauteed?

Yes, the simplest way in the world - just do not remove the stems entirely. Simply trim the stems, cutting them flush with the bottoms of the mushroom caps. Sauteed, the caps will then remain intact.

Michigan Fine Granulated

SUGAR 48¢
5-Lb. Bag

Swansdown - All 5 Varieties

CAKE MIXES 4 1-Lb., 2 1/2-Oz. Boxes \$1.00

Jiffy

BAKING MIX 29¢
2 1/2-Lb. Box

Royal Gelatin

DESSERT 7¢
All 6 3-Oz. Varieties Pkg.

STORE HOURS:

Monday thru Wednesday
9 a.m. to 6 p.m.
Thursday and Friday
9 a.m. to 9 p.m.
Saturday
8 a.m. to 9 p.m.
Sunday
10 a.m. to 6 p.m.

Carnation
Evaporated Milk 3 14-Oz. Cans 39¢

Mrs. Owen's
Strawberry Preserves 2-Lb. Jar 69¢

Shur-Good Rosettes
Cookies 49¢
1 1/4-Oz. Pkg.

Sunshine Hi-Mo
Crackers 29¢
10-Oz. Pkg.

Hekman's
Saltine Crackers . . . 29¢
1-Lb. Box

Nabisco Cookies
Oreo Cremes 47¢
1-Lb. Pkg.

Libby's
Pumpkin 23¢
1-Lb., 3-Oz. Can

Blue Ribbon Golden
Margarine 89¢
In 1/4-Lb. Prints 5 lbs.

Wolverine Fresh, Crisp
Potato Chips 49¢
14-Oz. Bag

Kraft's Miniature
Marshmallows 19¢
10 1/2-Oz. Pkg.

Treesweet Fresh, Frozen Florida
Orange Juice 5 6-Oz. Cans \$1.00

Special Pure
Apple Juice 19¢
1-Quart Bottle

Dole Trop-Kal
Hawaiian Fruits 3 13-Oz. Cans \$1.00

Kraft's Dessert
Dessert Topping . . . 39¢
9 1/2-Oz. Cap Pressurized

Oaken Keg
Sweet Pickles 49¢
2-Lb. Jar

Kraft's Philadelphia Brand
Cream Cheese 29¢
8-Oz. Pkg.

Ocean Spray - Whole or Jellied
Cranberry Sauce . . . 19¢
1-Lb. Can

Domino Brown or 10X
Sugar 15¢
1-Lb. Box

Van Camp's
Pork 'N Beans 29¢
2 1-Lb. Cans

Pillsbury Hungry Jack
Pancake Mix 45¢
2-Lb. Box

Legal Notices

MORTGAGE SALE

Default having been made in the terms and conditions of a certain mortgage...

And no sale or proceedings at law or otherwise have been instituted to enforce the same...

PHILIP J. WATSON, CITY BANK ASSOCIATES OF MICHIGAN, INC.

DIVORCE ACTION

ORDER TO ANSWER

State of Michigan, Probate Court for the County of Washtenaw...

MARKOHOE MILES, Defendant. In a certain case of the County of Washtenaw...

MORTGAGE FORECLOSURE SALE

Default having been made in the terms and conditions of a certain mortgage...

PHILIP J. WATSON, CITY BANK ASSOCIATES OF MICHIGAN, INC.

MORTGAGE FORECLOSURE SALE

Default having been made in the terms and conditions of a certain mortgage...

PHILIP J. WATSON, CITY BANK ASSOCIATES OF MICHIGAN, INC.

ORDER OF PUBLICATION

State of Michigan, Probate Court for the County of Washtenaw...

ORDER OF PUBLICATION

State of Michigan, Probate Court for the County of Washtenaw...

For Wayne County Legal Notice Publications

MORTGAGE SALE

Default having been made in the terms and conditions of a certain mortgage...

And no sale or proceedings at law or otherwise have been instituted to enforce the same...

PHILIP J. WATSON, CITY BANK ASSOCIATES OF MICHIGAN, INC.

DIVORCE ACTION

ORDER TO ANSWER

State of Michigan, Probate Court for the County of Washtenaw...

MARKOHOE MILES, Defendant. In a certain case of the County of Washtenaw...

MORTGAGE FORECLOSURE SALE

Default having been made in the terms and conditions of a certain mortgage...

PHILIP J. WATSON, CITY BANK ASSOCIATES OF MICHIGAN, INC.

MORTGAGE FORECLOSURE SALE

Default having been made in the terms and conditions of a certain mortgage...

PHILIP J. WATSON, CITY BANK ASSOCIATES OF MICHIGAN, INC.

ORDER OF PUBLICATION

State of Michigan, Probate Court for the County of Washtenaw...

ORDER OF PUBLICATION

State of Michigan, Probate Court for the County of Washtenaw...

For Wayne County Legal Notice Publications

DIVORCE ACTION

ORDER TO ANSWER

State of Michigan, Probate Court for the County of Washtenaw...

Present HONORABLE WILLIAM F. AGER, Jr., Circuit Judge...

It is HEREBY ORDERED that the Defendant BETSY L. WRIGHT shall answer...

MORTGAGE FORECLOSURE SALE

Default having been made in the terms and conditions of a certain mortgage...

PHILIP J. WATSON, CITY BANK ASSOCIATES OF MICHIGAN, INC.

MORTGAGE FORECLOSURE SALE

Default having been made in the terms and conditions of a certain mortgage...

PHILIP J. WATSON, CITY BANK ASSOCIATES OF MICHIGAN, INC.

ORDER OF PUBLICATION

State of Michigan, Probate Court for the County of Washtenaw...

ORDER OF PUBLICATION

State of Michigan, Probate Court for the County of Washtenaw...

ORDER OF PUBLICATION

State of Michigan, Probate Court for the County of Washtenaw...

ORDER OF PUBLICATION

State of Michigan, Probate Court for the County of Washtenaw...

ORDER OF PUBLICATION

State of Michigan, Probate Court for the County of Washtenaw...

ORDER OF PUBLICATION

State of Michigan, Probate Court for the County of Washtenaw...

MORTGAGE SALE

Default having been made in the terms and conditions of a certain mortgage...

And no sale or proceedings at law or otherwise have been instituted to enforce the same...

PHILIP J. WATSON, CITY BANK ASSOCIATES OF MICHIGAN, INC.

DIVORCE ACTION

ORDER TO ANSWER

State of Michigan, Probate Court for the County of Washtenaw...

MARKOHOE MILES, Defendant. In a certain case of the County of Washtenaw...

MORTGAGE FORECLOSURE SALE

Default having been made in the terms and conditions of a certain mortgage...

PHILIP J. WATSON, CITY BANK ASSOCIATES OF MICHIGAN, INC.

MORTGAGE FORECLOSURE SALE

Default having been made in the terms and conditions of a certain mortgage...

PHILIP J. WATSON, CITY BANK ASSOCIATES OF MICHIGAN, INC.

ORDER OF PUBLICATION

State of Michigan, Probate Court for the County of Washtenaw...

ORDER OF PUBLICATION

State of Michigan, Probate Court for the County of Washtenaw...

For Wayne County Legal Notice Publications

CHELSEA VILLAGE COUNCIL PROCEEDINGS

Regular Session

This meeting was called to order by Pres. Baldwin at 8:00 p.m. Invocation by the Rev. John...

A discussion was held regarding the intersection of Old US-12 and M-52. Police Chief John Palmer was instructed to contact the Michigan State Highway Dept. in this regard.

A discussion was held regarding the Michigan Consolidated Gas Company. Failure to backfill driveway areas with sand and gravel was mentioned.

A discussion was held with Mr. Tom Sellers regarding the construction of a 12" water main to service the northwest area of the Village. Mr. Sellers was advised to contact the City of Ann Arbor.

A discussion was held with Mr. Edwin Gaunt regarding a problem with an 18 foot well located on his property on the corner of Sibley and Werker Road. Mr. Gaunt will be advised.

Bids were received from the following firms for tractor type moving and snow removal equipment for the mowing of various village properties and for snow removal from the ice skating rinks and small areas within the Village.

Chelsea Hardware 10 h.p. Simplicity, \$890.00 equipped. Gambles 10 h.p. Wheel Horse, \$820.00 equipped. Chelsea Mower Shop, 10 h.p. \$710.00 plus equipment.

Trustee Chapman announced to the Council that Patrolman Charles Sharpe is no longer in the employ of the Village of Chelsea. Motion by Crouch, supported by Hollinger to authorize the clerk to issue checks in payment of bills regarding a 3-year fire protection contract. Linn, Sylvia, Sharon, Freedom, Dexter and Jordan in Washtenaw County and Waterloo in Jackson County. Roll call: Yeas all. Motion carried.

Meeting adjourned. Approved: Nov. 1, 1966. Donald E. Baldwin, President. George Winnis, Clerk.

CROSSWORD PUZZLE

ACROSS 1. Long out 9. Resorts 10. Fits of 12. Range part 13. Name 14. Tune 15. Cue 16. Music note 17. Factor 18. Cudgel 19. High card 20. Dainty 21. Dainty 22. Edge 23. Feralian prophet 24. Split 25. Fencer's spy 26. Geld 27. California 28. Exclamation 29. Appointment 30. Extinct bird 31. Creaton 32. Payment for Chacon 33. Male chud 34. Fat 35. 41. Perished 36. Telegraph

IN THE OPEN

A friend of mine has written a book that contains more factual, authentic, reliable, fascinating information about my favorite animal, the timber wolf, than any book I know about.

Western Auto, 8-h.p. \$713.00 equipped. Chelsea Hardware 10 h.p. Simplicity, \$890.00 equipped. Gambles 10 h.p. Wheel Horse, \$820.00 equipped. Chelsea Mower Shop, 10 h.p. \$710.00 plus equipment.

Trustee Chapman announced to the Council that Patrolman Charles Sharpe is no longer in the employ of the Village of Chelsea. Motion by Crouch, supported by Hollinger to authorize the clerk to issue checks in payment of bills regarding a 3-year fire protection contract.

Meeting adjourned. Approved: Nov. 1, 1966. Donald E. Baldwin, President. George Winnis, Clerk.

Chelsea Hardware 10 h.p. Simplicity, \$890.00 equipped. Gambles 10 h.p. Wheel Horse, \$820.00 equipped. Chelsea Mower Shop, 10 h.p. \$710.00 plus equipment.

Trustee Chapman announced to the Council that Patrolman Charles Sharpe is no longer in the employ of the Village of Chelsea. Motion by Crouch, supported by Hollinger to authorize the clerk to issue checks in payment of bills regarding a 3-year fire protection contract.

Meeting adjourned. Approved: Nov. 1, 1966. Donald E. Baldwin, President. George Winnis, Clerk.

Chelsea Hardware 10 h.p. Simplicity, \$890.00 equipped. Gambles 10 h.p. Wheel Horse, \$820.00 equipped. Chelsea Mower Shop, 10 h.p. \$710.00 plus equipment.

Trustee Chapman announced to the Council that Patrolman Charles Sharpe is no longer in the employ of the Village of Chelsea. Motion by Crouch, supported by Hollinger to authorize the clerk to issue checks in payment of bills regarding a 3-year fire protection contract.

Meeting adjourned. Approved: Nov. 1, 1966. Donald E. Baldwin, President. George Winnis, Clerk.

Chelsea Hardware 10 h.p. Simplicity, \$890.00 equipped. Gambles 10 h.p. Wheel Horse, \$820.00 equipped. Chelsea Mower Shop, 10 h.p. \$710.00 plus equipment.

Trustee Chapman announced to the Council that Patrolman Charles Sharpe is no longer in the employ of the Village of Chelsea. Motion by Crouch, supported by Hollinger to authorize the clerk to issue checks in payment of bills regarding a 3-year fire protection contract.

Meeting adjourned. Approved: Nov. 1, 1966. Donald E. Baldwin, President. George Winnis, Clerk.

WE HAVE THE GENUINE WIPAC FLEX-O-GLASS... CRYSTAL CLEAR... ONLY 39c... EASY TO INSTALL... MERKEL BROS.

STOP GOLD DRAFTS... EASY-ON... WE HAVE THE GENUINE WIPAC TOP QUALITY WINDOW MATERIAL... MERKEL BROS.

If You Plan to Build or Remodel Your Home... FREE ESTIMATES OR BIDS... HILLTOP PLUMBING, HEATING & ELECTRICAL CONTRACTORS... 401 SOUTH MAIN STREET... CHELSEA, MICH.

For Wayne County Legal Notice Publications The Legal Advertiser 30 Bartlett Ave., Detroit 3, Mich. Phone TOwler 6-9709

BOWLING NEWS

Chelsea Lanes Mixed League

Standings as of Nov. 4

Table with 2 columns: Team Name, Score. Includes Tool Shop, Droplets, Rays, etc.

Guys and Gals Mixed League

Standings as of Oct. 3

Table with 2 columns: Team Name, Score. Includes Manchester Farms, Chelsea Lanes, Rays, etc.

Senior House League

Standings as of Nov. 7

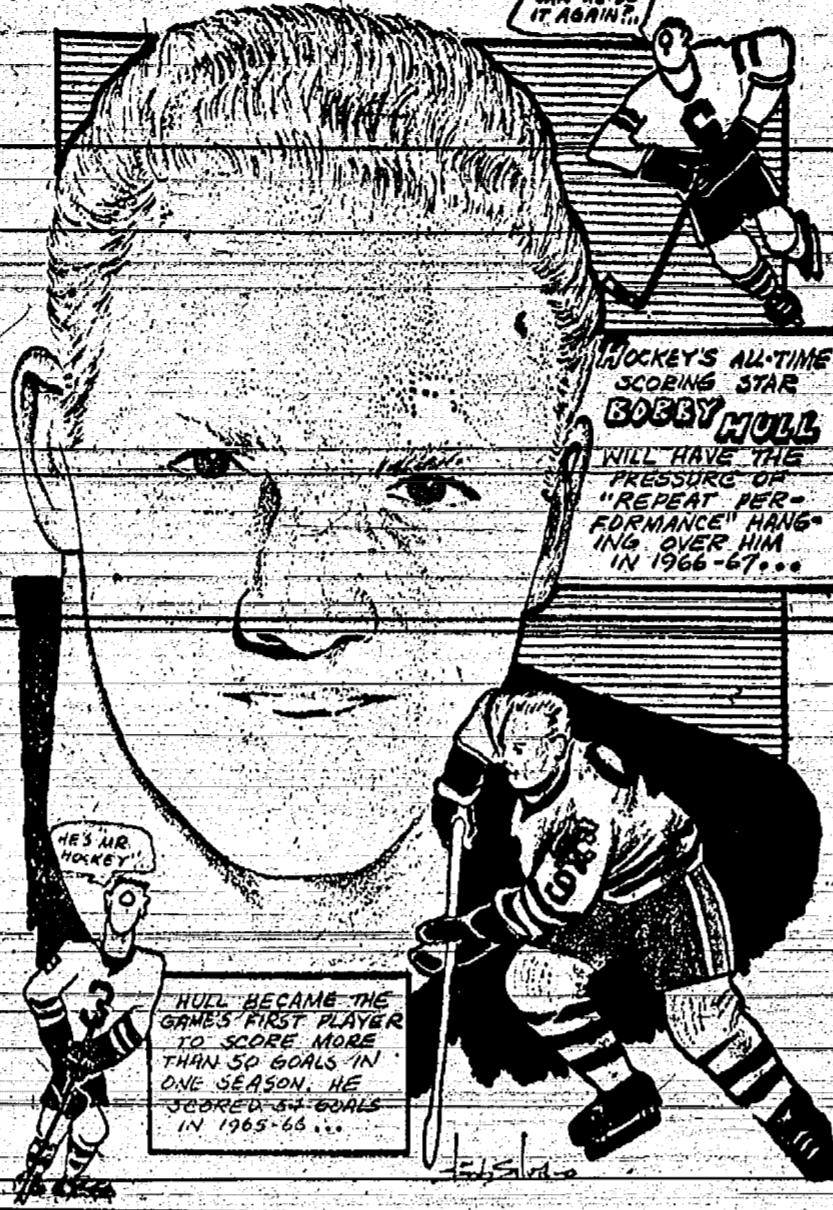
Table with 2 columns: Team Name, Score. Includes Chelsea Cleaners, Wolverine Bay No. 1, etc.

Junior House League

Standings as of Nov. 3

Table with 2 columns: Team Name, Score. Includes Parish's T-Birds, Parish's Cleaners, etc.

SPORTS CORNER



153; D. Hafner, 100; J. Weiner, 153; N. Kern, 181.

Vehicle Braking Power Shows Some Improvement

Lansing — Cars and trucks are building braking power, the State Highway Commission reports. The Commission said it has received a summary of the results of tests made by the U.S. Bureau of Public Roads on US-24 south of Monroe and in California and Maryland.

Arctic Becomes Center for Extensive Oil Explorations

New York — The frozen and desolate Arctic, land of the Eskimo and the polar bear, may one day become the "hub of the world," a center for transport, industry, even agriculture. The prediction is made in the current issue of Petroleum Today magazine.

Chelsea Industrial League

Standings as of Nov. 2

Table with 2 columns: Team Name, Score. Includes Chelsea Lanes, No. 1, No. 2, etc.

Nite Owl League

Standings as of Nov. 7

Table with 2 columns: Team Name, Score. Includes Boyer Auto Supply, Chelsea Drug, etc.

Deer Season Violations Heard In Justice Courts

Conservation Officer Don Frye reports three persons appeared in Justice Court during the past week to plead guilty to conservation violations.

Ann Arbor Old Timers Bowling League

Standings as of Nov. 1

Table with 2 columns: Team Name, Score. Includes Blitz Beer, B.G.R., Colonial Lanes, etc.

Chrysler Proving Grounds League

Standings as of Nov. 8

Table with 2 columns: Team Name, Score. Includes Fleet Mobil, Frigid Products, etc.

happy hunting begins HERE!

HUNTING INSURANCE

THAT PROVIDES PROTECTION AT A LOW COST!

A. D. MAYER AGENCY

Your Protection Is Our Business! 115 PARK STREET CHELSEA, MICH. Phones: Office 479-5061; Res., GR 5-4201

Advertisement for United States Brewers Association, Inc. featuring a glass of beer and a newspaper. Text: 'It's good to get home... after a day of hard work or hard play.'

Tri-City Mixed League

Standings as of Nov. 4

Table with 2 columns: Team Name, Score. Includes Parish-Cruise, Schitz, etc.

Rolling Pin League

Standings as of Nov. 8

Table with 2 columns: Team Name, Score. Includes Mopper Uppers, Coffee Cops, etc.

BOWL for the fun of it...

Advertisement for Chelsea Lanes featuring an illustration of a bowling game. Text: 'Having Fun Lately? Bowling Is a Ball! Put some fun in your life... Bowl for laughter and health at our modern, well-equipped lanes with rarely a wait.'

McCalla Brothers Will Exhibit Swine at International Show

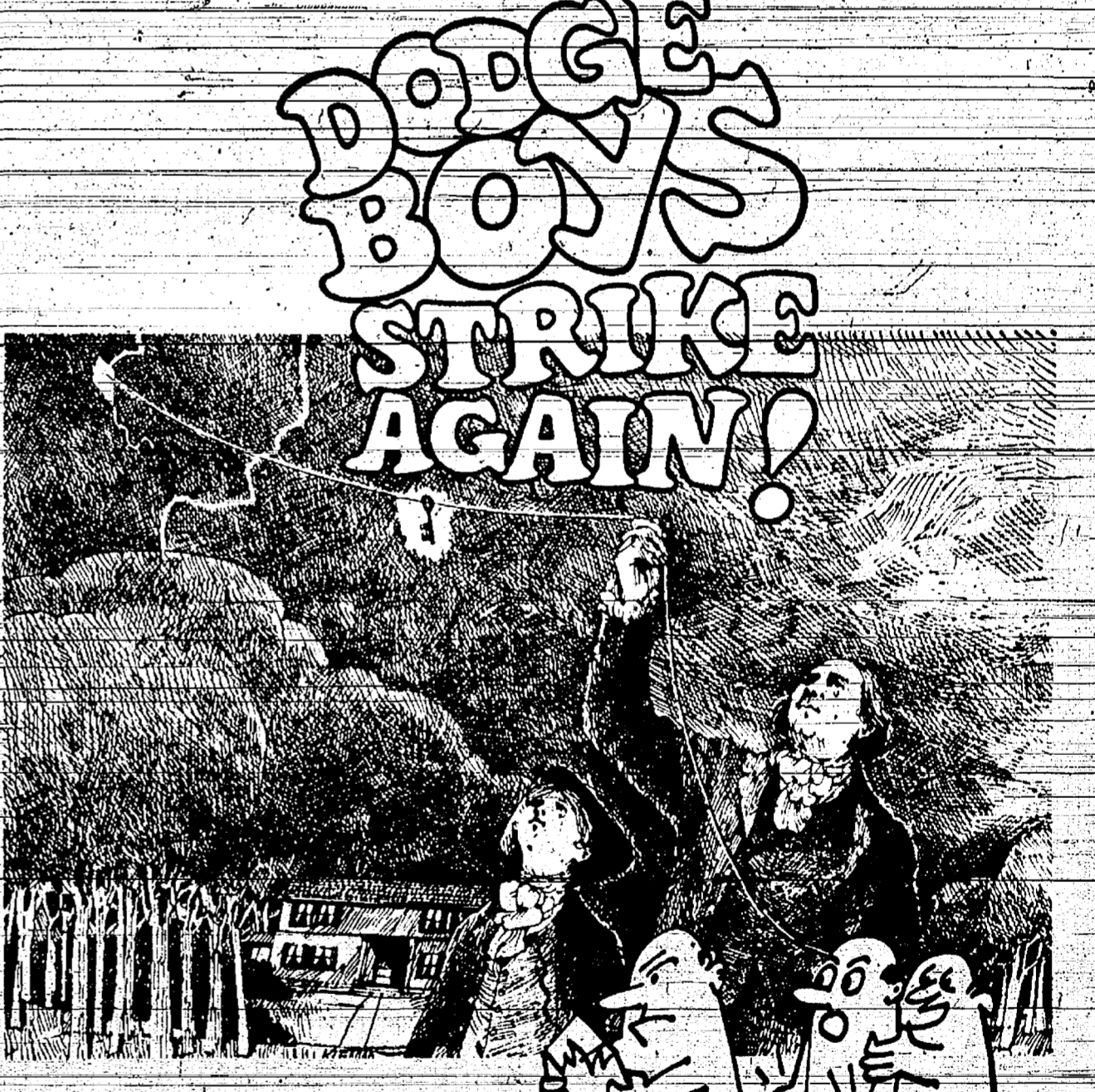
Chicago — Washington county is among the Michigan counties from which entries are reported for the 1966 International Livestock Exposition to be held here Nov. 25 to Dec. 3.

YOUR FAVORITE SANDWICHES

Served at all hours. BEER - WINE - ALE Dancing at all times.

WONDER BAR

20750 Old US-12 West Phone 479-9841



With the most electrifying news of the year. There is only one live wire in the compact field, and you're looking at it. The '67 Dart is longer, hotter, totally new from roof to road. And the Dodge Boys have this man-sized car priced down with the compacts. Strike out against cramped compacts with an all-new Dart.

Advertisement for G. A. Sales & Service featuring a Dodge Dart car. Text: '67 Dart G. A. SALES & SERVICE 1185 Manchester Road Chelsea, Michigan THE DODGE BOYS'



GETTING READY FOR THE 'BIG SCOOP' during the coming winter snows are crews of the Department of State Highways. Bob Richardson, left, heavy equipment supervisor, and two Lansing area mechanics, Vern Menzies and Leo Titt, inspect plows mounted on trucks at the Highway Department's maintenance garage at 1-00 and M-16 west of Lansing. The Department utilizes equipment and service of county and local units of government in most areas of the state. Total cost of snow removal on state highways is expected to be near \$10 million.

Michigan Road Maintenance Crews Preparing for Winter

Lansing — Mechanics for the Department of State Highways are putting the finishing touches on road maintenance equipment. Activity in the Automotive and Equipment Division of the Highway Department was started in late summer by mechanics and painters working out of 30 locations where 4,300 units of equipment of various sorts are housed. Twelve equipment inspectors supervise the work. Of the equipment items, the Highway Department lists 803 as directly involved in the winter maintenance program. These include trucks, motor graders, front-end loaders, snows, hopper box and tail-gate type material

Corn Crop Losses To Blackbirds Are Being Studied

Damage to Monroe county corn crops is under investigation this week by Richard Wetzel, a federal biologist who recently came to Michigan to assist farmers in their combating war against blackbirds and rodents. Wetzel will take 6,000 samples from cornfields throughout Monroe county within the next 10 days in an effort to determine corn crop losses to blackbirds on 60,000 farm acres in the county. "This is the beginning of stepping efforts to help Michigan farmers who have been at the mercy of flocks of millions of blackbirds," said Director B. Dale Ball of the Michigan Department of Agriculture. "Other studies will be directed toward bird losses in small fruits and feedlots, mice damage in apple orchards, protection of turkeys and chickens from predators, grain losses to rodents and Christmas tree damage by pile grubbeaks."

Clip Cows Now for Milk Sanitation

To make it easier to maintain adequate milk sanitation programs during the winter, dairy herd owners should clip objectionable hair on a few cows each day from now until the arrival of low temperatures. This is the suggestion of the acting chief of the Michigan Department of Agriculture, Dairy Division, Kenneth Van Datten. The Dairy Division is responsible for enforcement of all of the state's laws governing wholesomeness of milk from farm to retail outlet. Van Datten says clipping cattle is not a legal requirement, but it is necessary in order to make the milking process more sanitary. Strict sanitation is essential at all levels in milk production. He says clipping is usually easy in the autumn, but difficult after cattle have been housed indoors for weeks. Clippers may be rented from milk producer associations and many farmers that are interested in receiving raw milk of the highest quality possible. Inspectors of the Dairy Division check in all parts of the state and in all levels of milk production to maintain the high standards of dairy product wholesomeness required by Michigan law.

Feed Grain Program for '67 Revealed

The 1967 feed grain program—except for a few basic changes—will be the same as in previous years, Carl Dolezky, chairman, Agricultural Stabilization and Conservation County Committee, said today. Basic changes will be a higher loan rate, higher total price support, and the elimination of voluntary diversion for payments except on small farms for which diversion payments earned may be higher than in 1966. The chairman pointed out that the program will encourage farmers to divert from 15 to 18 million acres in 1967, compared with 30 million acres of corn and grain sorghum land diverted in 1966. (As announced previously, barley is not included in the 1967 feed grain program.) Loan rates for the two grains were increased for 1967—5 cents for corn and 9 cents for sorghum—and the price support payment rates stay the same as for 1966. For corn, this means a price support loan of \$1.05 per bushel, national average, and payment of 30 cents a bushel. For grain sorghum, the loan will be \$1.01 per hundredweight, national average, and a payment of 28 cents. Loans will be available on all corn and grain sorghum produced on participating farms. The price support payments will be computed on the projected yield of acres planted up to 50 percent of the base acreage. All farmers will divert 20 percent of the farm's corn-grain sorghum base in order to qualify for price support payments and loans. Except on small farms, there will be no diversion payments. The payment for additional diversion was dropped from the program in view of the need for increased production and the possibility of encouraging the diversion of too much acreage—as well as to simplify the program. For small farms, the diversion program provisions for 1967 are the same as for 1966, but payments will be higher. Farms with feed grain bases of 25 acres or less will again be eligible for diversion payments equivalent to 20 percent of the support (loan plus price support payment) for the qualifying diversion (20 percent of the base acreage) and 50 percent of the support or any additional acres diverted, up to the total base. Producers with bases of more than 25 acres who divert 25 acres and plant no feed grains will be eligible for diversion payments equivalent to 20 percent of the support on 5 acres and 50 percent of the support on 20 acres. (Conserving base and acreage substitution features of the 1967

Free Diabetes Tests Offered

Free blood tests to determine if persons are diabetic suspects will be offered Nov. 14-15, under auspices of the Michigan and Ann Arbor Diabetic Association. The free blood tests will be offered at a mobile trailer in Ann Arbor at the Westgate Shopping Center on Nov. 14, 15, and 16. The trailer will be located at the Westgate Shopping Center between the shops of 1 and 2 p.m. The testing program is to be conducted in connection with National Diabetes Week. There are 10 million diabetics in the country, but it has been estimated there are 1 million more diabetics not yet diagnosed.

Bible Verse Answers

1. Where is the Kingdom of God? (Matt. 25:10) The Kingdom of God is within you. 2. How can I find God? (John 1:18) No man has seen God, but the only Son, who has been with God and who has made him known, has revealed him. 3. How can I know God? (John 1:18) No man has seen God, but the only Son, who has been with God and who has made him known, has revealed him. 4. How can I love God? (John 1:9) The light that enlightens every man who comes into the world. 5. How can I be saved? (John 1:12) To all who receive him, he gives the right to become children of God.

Present Freeway System Needs 2,000 More Miles by 1980 To Keep Pace

East Tawas — Michigan must build an additional 2,000 miles of freeway during the next 15 years to prevent a "huge traffic jam" from occurring in the early 1980's, a member of the State Highway Commission warned members of the Northeastern Michigan Association of Chambers of Commerce. Commissioner Mike Nunn said the nearly 1,300 miles of existing Michigan freeways will not solve all of our problems as far as moving traffic is concerned. "The fact is that we'll need 2,000 miles of freeway in 1980 if we are to move traffic from one point to another anywhere in Michigan," Nunn said. And by then, he said, most of the freeways now open to traffic will have to be widened from four to six lanes in rural areas and from six to eight lanes in cities. Nunn said completion of 1-75 from the Bay City suburb of Kalamazoo to Grayling in three years will have a "tremendous impact" on Northeastern Michigan. "It will relieve traffic congestion for a few years, he said, but the north will soon need a second free-

Michigan Has More Than \$1 Billion Invested In Interstate Highways

Lansing — Michigan has passed the \$1 billion mark in the amount of money invested in its Interstate highway system, the State Highway Commission reports. Commission Chairman Ardale W. Ferguson of Benton Harbor said Michigan had invested \$1,025,000,000 in Interstate highways during the 10-year period ending last June 30. "This represents 65 percent of the anticipated cost of Michigan's 1,000-mile network of Interstate freeways. Total cost of Michigan's system is expected to be \$1,584,000,000."

BIBLE VERSE TO STUDY

"In God have I hope; I will not fear what man can do to me."

- 1. Who made this statement? 2. Of what was he complaining? 3. Where was this verse written? 4. What similar comforting verse is found in the 25th chapter? (Answers elsewhere on this page) Be yourself, be natural, it may not be glamorous, but it is more productive in the long run.

The Serviceman's Corner



AIRMAN EUGENE C. MORLEY

Airman Eugene Morley Chosen for Air Force Technical Training

San Antonio, Tex. — Airman Eugene C. Morley, son of Mr. and Mrs. Paul Morley of 237 E. North St., Chelsea, Mich., has been selected for technical training at Sheppard AFB, Tex., as a U.S. Air Force medical service specialist. The airman recently completed basic training at Lackland AFB, Tex. His new school is part of the Air Training Command which conducts hundreds of specialized courses to provide technically trained personnel for the nation's aerospace force. Airman Morley is a 1966 graduate of Chelsea High school.

A 1-c Carl Gieske, Jr. Leaving for Turkey On Air Force Duty

A 1-c Carl A. Gieske, Jr., leave Nov. 10 for Karaman, Turkey, where he will be stationed for two years with the U. S. Air Force. Airman Gieske and wife, the former Sandra Scott, have been visiting in the Chelsea area on a 42-day leave. Mrs. Gieske is the daughter of Mrs. Bimmescher, and she spent two years in San Antonio, Tex. He was honored Saturday evening at a going-away party given by Mrs. Gieske's sister, Mrs. Edward Harok of 220 E. North St., Chelsea, Mich. Gieske is the son of Mrs. Fred Kalmbach of Sheboyganville, Pa., and the late Carl Gieske of Chelsea.

State's Roadside Litter Pick-Up Costs Double

Lansing — The cost of the pick-up along state highways more than doubled during the five years, the State Highway Commission reports. Roadside clean-up costs from \$322,000 in 1961 to \$700,000 for the fiscal year that ended June 30. Highway Department officials said increased travel and the cost of litter pick-up on freeways along with normal increases in cost of labor were the main reasons for the increase in clean-up costs. The state's edible dry bean industry, the largest in the state, supplies 90 percent of the beans, as well as several other varieties, says the Michigan Commission on Greater Values. About \$50 million per year, the program will continue as in 1966. Soybeans will again be eligible for planting on permitted acreage without loss of corn-sorghum price-support payments. Chairman Carl Dolezky said that the program sign-up period will begin early next year with wheat program sign-up being held at the same time.

Rarin' To Go...

Your battery, that is, after our dependable recharging! We'll put your old battery back into "championship form" ready to give you many months of peppy, steady, dependable service. PURE OIL PRODUCTS JIM'S PURE SERVICE Tires — Batteries — Tune-Ups — Brake Service — Wheel Alignment PHONE 479-3541 501 SOUTH MAIN

MAUSOLEUMS * MONUMENTS BRONZE TABLETS * MARKERS MEMORIALS BECKER 6033 Jackson Road ANN ARBOR, MICHIGAN

Distinctive WEDDING ANNOUNCEMENTS INVITATIONS INVITATIONS of ANNOUNCEMENTS... Let us provide you with the very finest printed or engraved invitations and announcements. Make certain that your wedding stationery is of top quality and conforms to correct social requirements. We can advise you on these important details. THE CHELSEA STANDARD Commercial Printing Department

Perfect Way To Please A Teen... Rytex "HI" Box It's the "swinging" look teenagers love... a correspondence box designed to keep them popular with friends and family. A gift they'll really use, at home or away... sure to make letters more fun than ever. Fine quality white paper with bright-color illustrations. Name-imprint in red. Box decorated for keepsake use after stationery is gone. 24-illustrated sheets and 24 matching envelopes. \$3.00 The Chelsea Standard MAIL ORDER COUPON THE CHELSEA STANDARD CHELSEA, MICHIGAN Please place my order for... boxes Rytex "HI" of \$3.00 a box Print Name: Ordered By: Street: City: State: Zip: Charge Payment enclosed Please include state sales tax

FREE HOLIDAY FOOD DEMONSTRATION Presented By HOME SERVICE STAFF of MICHIGAN CONSOLIDATED GAS COMPANY WEDNESDAY, NOVEMBER 16 Beginning at 7:30 p.m. CHELSEA HIGH SCHOOL AUDITORIUM Christmas Recipes for Everyone DOOR PRIZE - GAS LIGHT (To be installed on our lines.) Plus Foods Prepared in Demonstration MICHIGAN CONSOLIDATED GAS COMPANY

